



M/V : MISR GULF XIII

Specifications

7,200 BHP Anchor Handling Tug Supply Vessel



I.M.O No. : 8112835
MMSI No. : 375697000
Iridium Phone : + 8816 3155 7058

OFFICIAL No. : 10236
CALL SIGN : J8B3763

Year Built: 1982
Classification: ABS + A1 + AMS + E
Ex. Name : Temasek Dian
Dimension: 66.4 m x 13.6 m x 5.2 m
Draft - Light: 2.60 m / Loaded: 4.45 m
GRT: 1,275 / DWT: 1,484

CARGO CAPACITY

Fuel Oil: 419 m3
Potable Water: 355 m3
Drill Water: 362 m3 (207 m3 dual with mentor)
Mentor Oil: 287 m3 (207 m3 dual with drill water)
Liquid Mud: 260 m3
Bulk Cement: 6 x 1000 ft3. Total 6000 ft3
Deck Cargo: 1000 tons max.
Clear Deck Space: 34.5 m x 10.0 m

REFRIGERATED STORAGE

Freezer Room: 9.5 m3 / Chiller Room: 9.5 m3

ACCOMMODATION

1 man cabin: 4 nos.
6 men cabin: 2 nos.
4 men cabin: 4 nos.
2 men cabin: 2 nos.
Fully Air-Conditioned

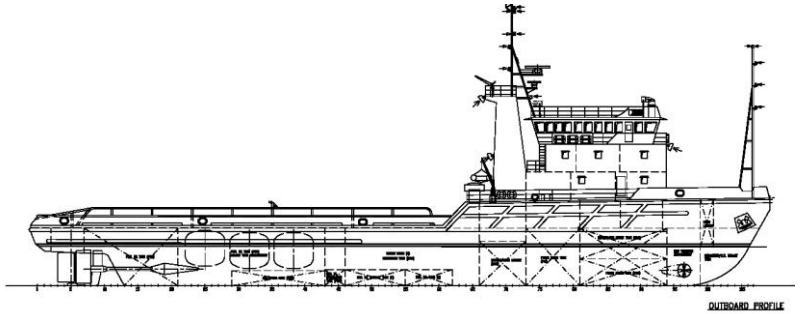


NAVIGATION & COMMUNICATION

All round view wheelhouse.
 Forward & aft control consoles.
 Radar, echo sounder, auto-pilot,
 Gyro/magnetic compasses, GPS,
 SSB & VHF transceivers, weather fax,
 Intercom / P.A. system
 GMDSS Area A3

ANCHOR HANDLING EQUIPMENT

Winch: Double drum waterfall type
 Line Pull: 150 tons
 Brake: 200 tons
 Wild Cats: 2 x 3"
 Towing Wire 58 mm. diam. 750 m. Length
 Spare wire 52 mm diam. 1000 meters length .
 Stern Roller: 2.4 m x 1.3 m dia.
 Chain Locker: 2 x 40 m3 each
 Tugger: 1 x 5 tons electric
 Shark Jaw: 1 x Triplex type



MAIN MACHINERY & PROPULSION

Main Engine: 2 x Yanmar 12 Z-ET, 3600 each, total 7200 BHP
 Propulsion: 2 x Fixed pitch propellers in fixed nozzles
 Auxiliary Engine: 2 x GM8V-92T & 1 x GM6-71N
 Alternator: 2 x 210KW & 1 x 99KW, 415V/3P/50Hz
 Bow Thruster: 1 x CPP, 5.5T thrust, driven by 550 HP Engine .

CARGO PUMP CAPACITY

Fuel Oil: 100 m3/hr at 50 m head
 Potable Water: 100 m3/hr at 50 m head
 Drill Water: 100 m3/hr at 50 m head
 Mentor: 50 m3/hr at 30 m head
 Liquid Mud: 2 x 70 m3/hr at 40 m head
 Ballast: 50 m3/hr at 40 m head
 Bulk: 533 CFM at 40 psi with dryer/cooler

FIRE FIGHTING CLASS I &

One pump 1400 m3/hr at 130 m.w.c. with monitor on main deck .
 One pump 600 m3/hr at 130 m.w.c. with monitor on main deck .
 Two pumps 2x 350 m3/hr at 130 m.w.c. on top bridge .
 Total 2700 m3/hr at 130 m.w.c.

ANTI-POLLUTION:-

Spray Boom: 2 x 19 ft length each
 Dispersant Tank: 6000 ltrs

SPEED

12 knots

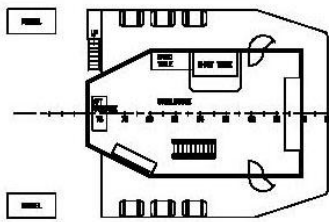
BOLLARD PULL

57.28 tons continuous

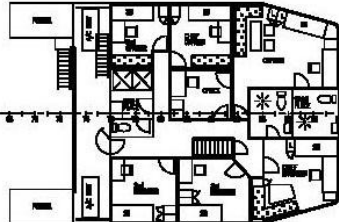
601, El Horreia Avenue El- Gawhara Building , Zezenya- Alexandria – EGYPT
 Tel: (203) 5755601-602-603
 Fax: (203) 5780957
 3, Hasan Sadek Basha St. - Cairo
 Tel : (202) 4196298
 Web : www.misrgulf.com
 E-mail : misrgulf@misrgulf.com



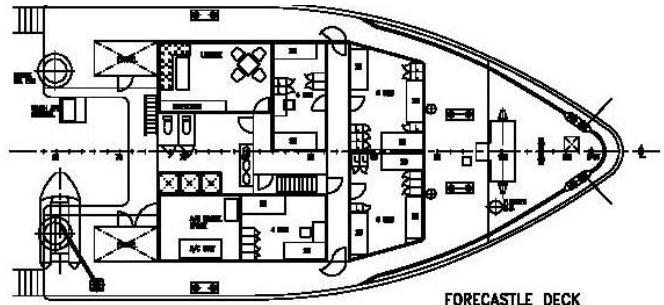
MV: MISR GULF XIII



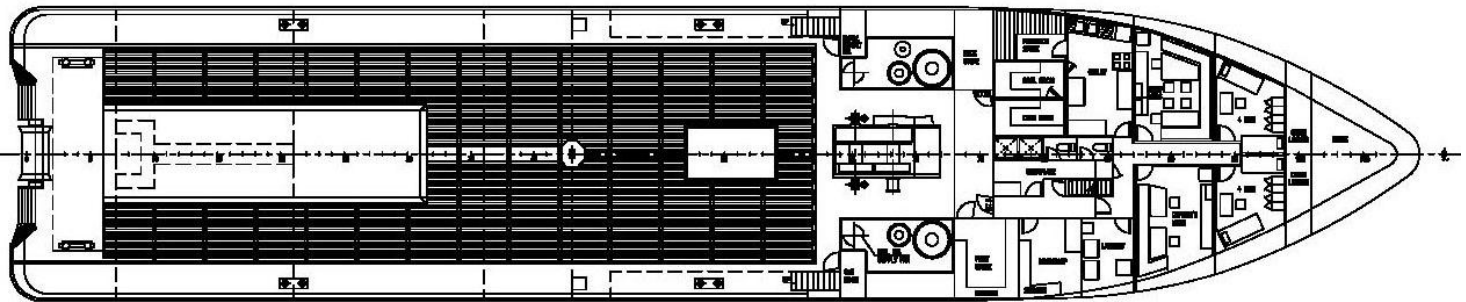
WHEELHOUSE DECK



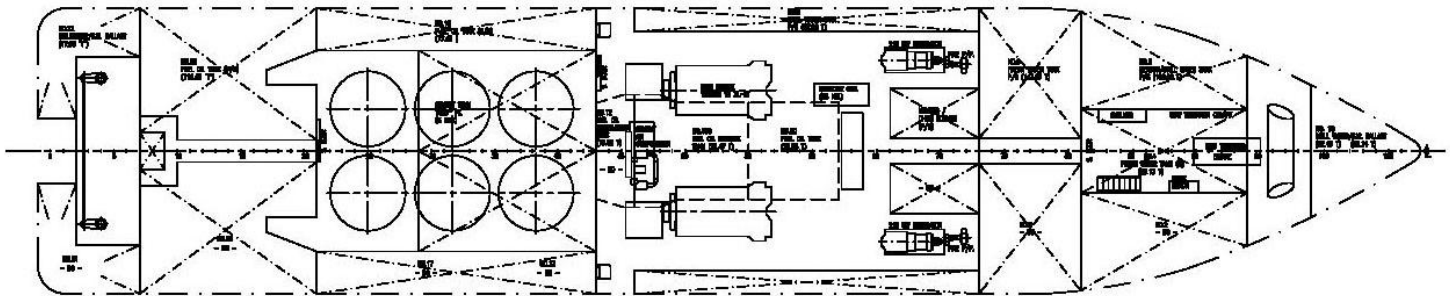
UPPER DECK



FORECASTLE DECK



MAIN DECK



BELOW MAIN DECK

601, El Horreia Avenue El- Gawhara Building , Zezenya- Alexandria - EGYPT
Tel: (203) 5755601-602-603
Fax: (203) 5780957
3, Hasan Sadek Basha St. - Cairo
Tel : (202) 4196298
Web : www.misrgulf.com
E-mail : misrgulf@misrgulf.com